

DRAIN VALVE ECR-3



- Drain valve ECR3 is a device intended for use to drain the water generated due to condensation inside the enclosure.
- Drain valve is assembled in the lowest part or side part of the enclosure because the water is accumulated in bottom part of enclosure.
- Made of stainless steel or galvanized steel.
- Gasket is in aluminium.
- O-ring is in silicon rubber.

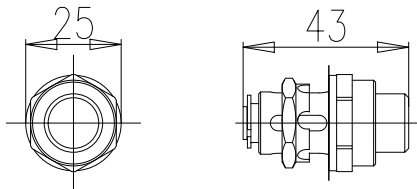
MARKING

II 2GD – Ex e IIC Gb – Ex tb IIIC IP66/67

TECHNICAL FEATURES

Material	Stainless steel AISI 316 L or galvanized steel
IP rating	IP66/IP67 in closed position IP44 in open position.
Ambient temperature range	-50°C +105°C
Approvals	ATEX: IMQ 14 ATEX 019U – IECEx: IMQ 14.0008U - EAC: RU C-IT.BH02.B.00593/20
Standard compliance	EN60079-0:2012; EN60079-7:2007; EN60079-31:2009 IEC60079-0:2011; IEC60079-7:2006-07; IEC60079-31:2008
Gaskets	Silicone gasket (continuous use temperature -60 ° C + 220 ° C)
Dimension	M16 x 1.5 6H or pre-hole diameter from 16 mm to 16.5 mm

Dimensions ECR-3



CODE	TYPE
B080909000006	ECR 3 DRAIN VALVE